

THE NEW ALSET



WWW.ALSETEHOMEINTL.COM | NASDAQ: AEI

DISCLAIMER

THIS PRESENTATION IS PROPRIETARY AND CONFIDENTIAL; IT MAY NOT BE REPRODUCED, IN WHOLE OR IN PART, AND MAY NOT BE DELIVERED TO ANY PERSON WITHOUT THE PRIOR CONSENT OF ALSET INTERNATIONAL LIMITED. THIS DOCUMENT IS BEING PROVIDED TO YOU SOLELY FOR INFORMATIONAL PURPOSES. IT IS NOT INTENDED TO BE, NOR SHALL IT BE CONSTRUED AS, AN OFFER, OR SOLICITATION OF AN OFFER, TO BUY OR SELL AN INTEREST IN THE COMPANY. NOTHING IN THIS DOCUMENT CONSTITUTES ACCOUNTING, LEGAL, REGULATORY, TAX OR OTHER ADVICE. ANY DECISION TO SUBSCRIBE FOR INTERESTS IN THE COMPANY MUST BE MADE SOLELY ON THE BASIS OF INFORMATION CONTAINED IN SUBSCRIPTION AGREEMENT, WHICH INFORMATION MAY BE DIFFERENT FROM THE INFORMATION CONTAINED IN THIS DOCUMENT, INCLUDING ANY DATA, PROJECTIONS, AND UNDERLYING ASSUMPTIONS ALL OF WHICH ARE ACCORDINGLY SUBJECT TO CHANGE AT ANY TIME WITHOUT NOTICE. IN PREPARING THIS DOCUMENT, WE HAVE RELIED UPON AND ASSUMED, WITHOUT INDEPENDENT VERIFICATION, THE ACCURACY AND COMPLETENESS OF ALL INFORMATION AVAILABLE FROM PUBLIC SOURCES OR WHICH WAS OTHERWISE REVIEWED BY US. WHILE INFORMATION PROVIDED HEREIN IS BELIEVED TO BE RELIABLE, THE COMPANY MAKES NO REPRESENTATION OR WARRANTY WHETHER EXPRESS OR IMPLIED, AND ACCEPT NO RESPONSIBILITY FOR ITS COMPLETENESS OR ACCURACY OR RELIABILITY. PAST PERFORMANCE OF PROGRAMS ARE NOT NECESSARILY INDICATIVE OF FUTURE RESULTS.

THE NEW ALSET

ALSET[®]

10 DIVISIONS

SELECT DIVISION

**ALSET EHOME
COMMUNITY
DEVELOPMENT**

**ASSET
MANAGEMENT**

**BANKING
& FINANCE**

**DIRECT
SALES**

**INVESTMENT
DIVISION**

**SPAC
DIVISION**

**FOOD
& BEVERAGE**

BIOMEDICAL

**PRINTING
AND PACKAGING**

**DIGITAL
TRANSFORMATION**

ALSET EHOME COMMUNITY DEVELOPMENT DIVISION

ALSET EHOME COMMUNITY DEVELOPMENT
& LAND DEVELOPMENT



[CLICK BELOW BAR TO RETURN TO DIVISION MENU](#)



EHOME FEATURES



SOLAR ENERGY SYSTEM



SMART HOME



HOME OFFICE



FILTERED WATER



PURIFIED AIR



ELECTRIC VEHICLE

COMMUNITY FEATURES



SOLAR FARM



VEHICLE-TO-GRID



MODULAR ORGANIC FARM

UPCOMING FEATURES



ENERGY EFFICIENT
HEPA FILTERED HVAC



TELEMEDICAL



ROBOTAXI



ALSET
MEMBERSHIP



HWH
MEMBERSHIP



CRYPTO MINING
SYSTEM

Visit Website:
[Alset EHome Inc.](#)

Watch Video:
[Alset EHome Concept](#)

Watch Video:
[Tesla Installation](#)

Watch Video:
[Home Crypto Mining](#)



ALSET EHOME Community Development & Land Development



Alset at Black Oak
Houston, Texas



Ballenger Run
Frederick County, Maryland



Northpark Woods
Porter, Texas



Alset Villas
Magnolia, Texas



Sorrento Bay
Lake Conroe, Willis



Woodland Lakes
Huffman, Texas



Sante Fe
Cleveland, Texas



BUSINESS MODEL

Alset EHome focus on building a **Sustainable Healthy Living System** including a **REIT for long-term income**.

1

BUILD FOR SALE

Property Management Services included for Investors looking to earn rental yield.

2

BUILD FOR RENT

Targeting a rental yield of **5%**



3

TRANSFER TO AMERICAN HOME REIT

Target: **6% Yield**

Visit Website:
[Alset EHome > Business Model](#)

Watch Video:
[Alset EHome Business Model](#)

Develop, Build, Purchase



Cash Payment



Sell to REIT



Generating Stable Dividend Yield for Investors

Watch Video:
American Home REIT

ASSET

MANAGEMENT

DIVISION

REAL ESTATE INVESTMENT TRUST MANAGEMENT



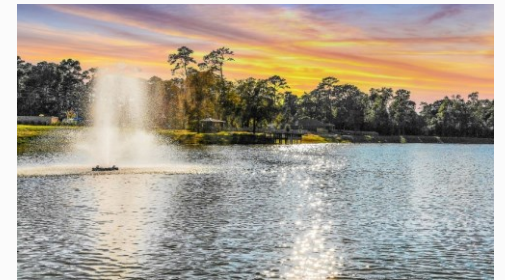
[CLICK BELOW BAR TO RETURN TO DIVISION MENU](#)

REAL ESTATE INVESTMENT TRUST MANAGEMENT



LEVERAGING ON ALSET EHOME RENTAL UNITS

- Recurring income streams
- Ensures quality control
- Economies of scale (Cost-effective management)



Visit Website:
[American Home REIT](#)

REAL ESTATE INVESTMENT TRUST MANAGEMENT



Acquired **5** Medical Properties

3 Medical
Facilities

Well-established
with Clinic

2 Acute Care
Hospitals

195 hospital beds
Total area: 380,000sqft



Ivy Brook, Connecticut



Fort Worth, Texas



Plano, Texas



Pittsburgh, Pennsylvania



Winter Haven, Florida

Visit Website:
[American Medical REIT](#)

ASSET

MANAGEMENT

DIVISION

FUND MANAGEMENT



[CLICK BELOW BAR TO RETURN TO DIVISION MENU](#)

MUTUAL FUND MANAGEMENT



**AF Large Cap
Share
Buyback
Fund**

**AF Income
Fund**

**AF Risk On /
Risk Off Fund**

**AF Defensive
Growth Fund**

AMERICAN FIRST MUTUAL FUND

EMOTION-FREE MUTUAL FUNDS

Quantitative mutual funds are known to be some of the most innovative in the investment universe. As such, they may often deploy some of the industry's most groundbreaking technologies.

Visit Website:
[AmericaFirst Quantitative Funds](#)

CRYPTO DIGITAL ASSET MANAGEMENT

LAUNCHING IN 2022



CREDAS
CAPITAL

DIGITAL ASSET
EXCHANGE-TRADED PRODUCT (ETP)
SuperCrypto15 (SC15)

Target listing in **Swiss Exchange**

Joint Venture:



Visit Website:
[Credas Capital](#)



INSTITUTIONAL FUND FOR HEDGING

TRUE PARTNER CAPITAL (HKSE: 8657)

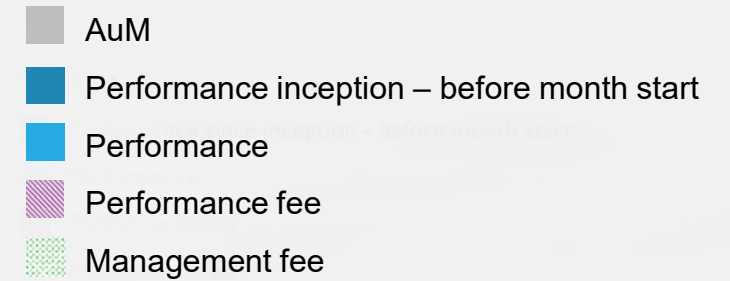
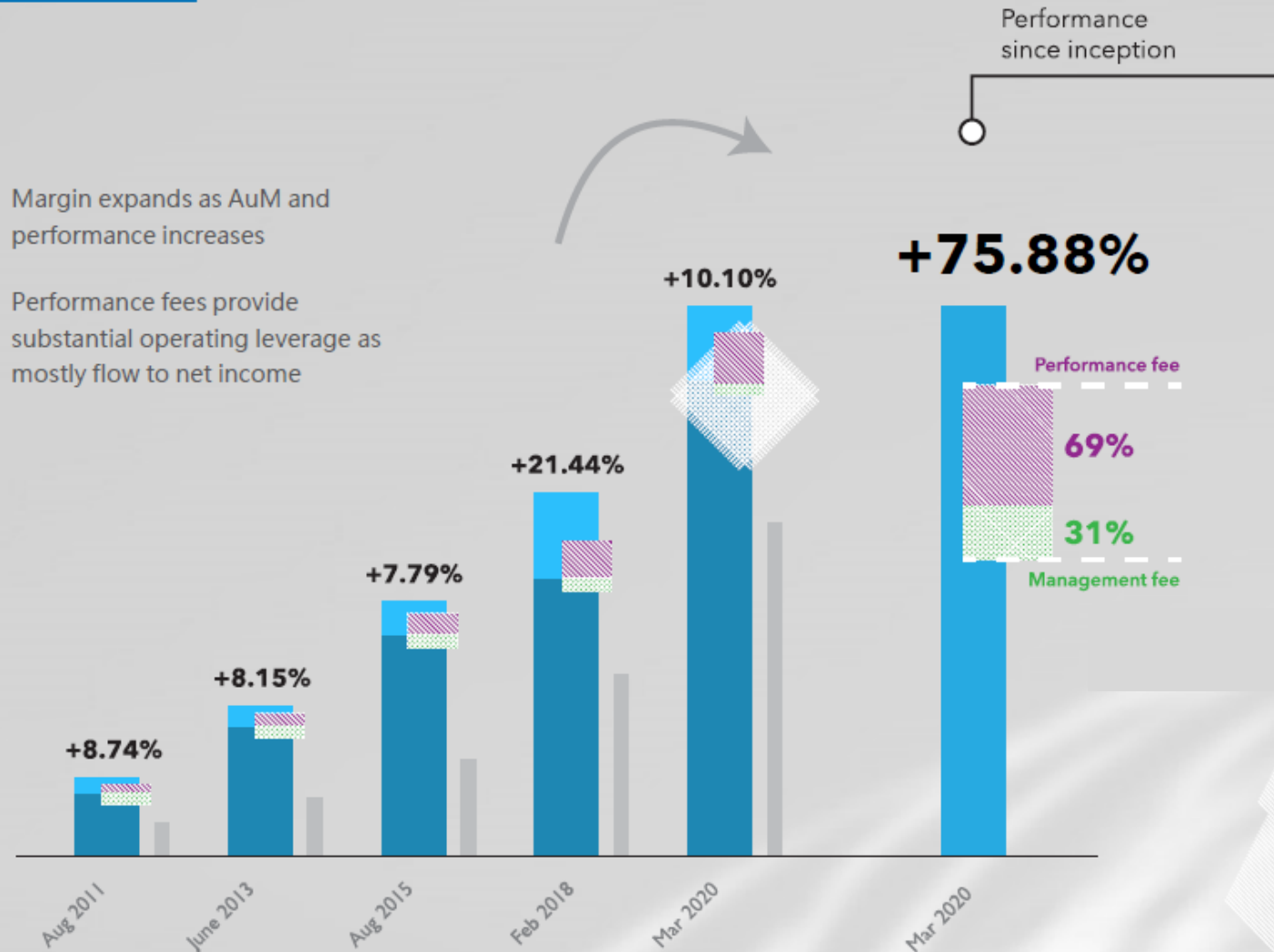
Market Cap: US\$ 47.5 Million | AEI ownership: 15.53%

True Partner is an active global volatility arbitrage fund

AUM over USD \$1.7 Billion

as of 1 Dec 2021

Earnings power and operating leverage



Visit Website:
[True Partner](#)



INSTITUTIONAL HEDGE FUND

A scalable and highly liquid proprietary algorithmic trading investment fund with attractive risk adjusted returns relative to the volatility and unpredictability of the markets

Visit Website:
[LiquidValue Asset Management](#)

ASSET

MANAGEMENT DIVISION

MARKET MAKING

SENTINEL
Brokers LLC

CLICK BELOW BAR TO RETURN TO DIVISION MENU

MARKET MAKING

SENTINEL Brokers LLC

A FINRA-registered broker-dealer that operates as a financial intermediary, facilitating institutional trading of municipal and corporate bonds as well as preferred stock and market making.



BANKING **& FINANCE** DIVISION

DIGITAL BANKING AND FINANCE

AmericanPacific
Bancrp

[CLICK BELOW BAR TO RETURN TO DIVISION MENU](#)



- Inventory Finance
- Product Production Finance
- Working Capital Finance
- Receivable Finance
- Manufacturing Equipment Finance

DIRECT

SALES

DIVISION

DIRECT SELLING COMPANIES



[CLICK BELOW BAR TO RETURN TO DIVISION MENU](#)



DIRECT SALES

The Happy Co having over **80,000** members globally since its launch in 2017.



DIRECT SALES

Founded in 2019, HWH World have over **30,000** members in Korea, and promising plans for global expansion.



DIRECT SALES

A global wellness company with decades of history in **R&D and Sales** of consumer nutrition products.



TRAVEL

Members can **Travel with Discounts** on hotels, resorts, cruises, and condos, plus extra savings on car rentals, activities, flights, and shopping.

Visit Website:
[The Happy Co](#)

Visit Website:
[HWH International](#)

Watch Video:
[HWH Products & Services](#)

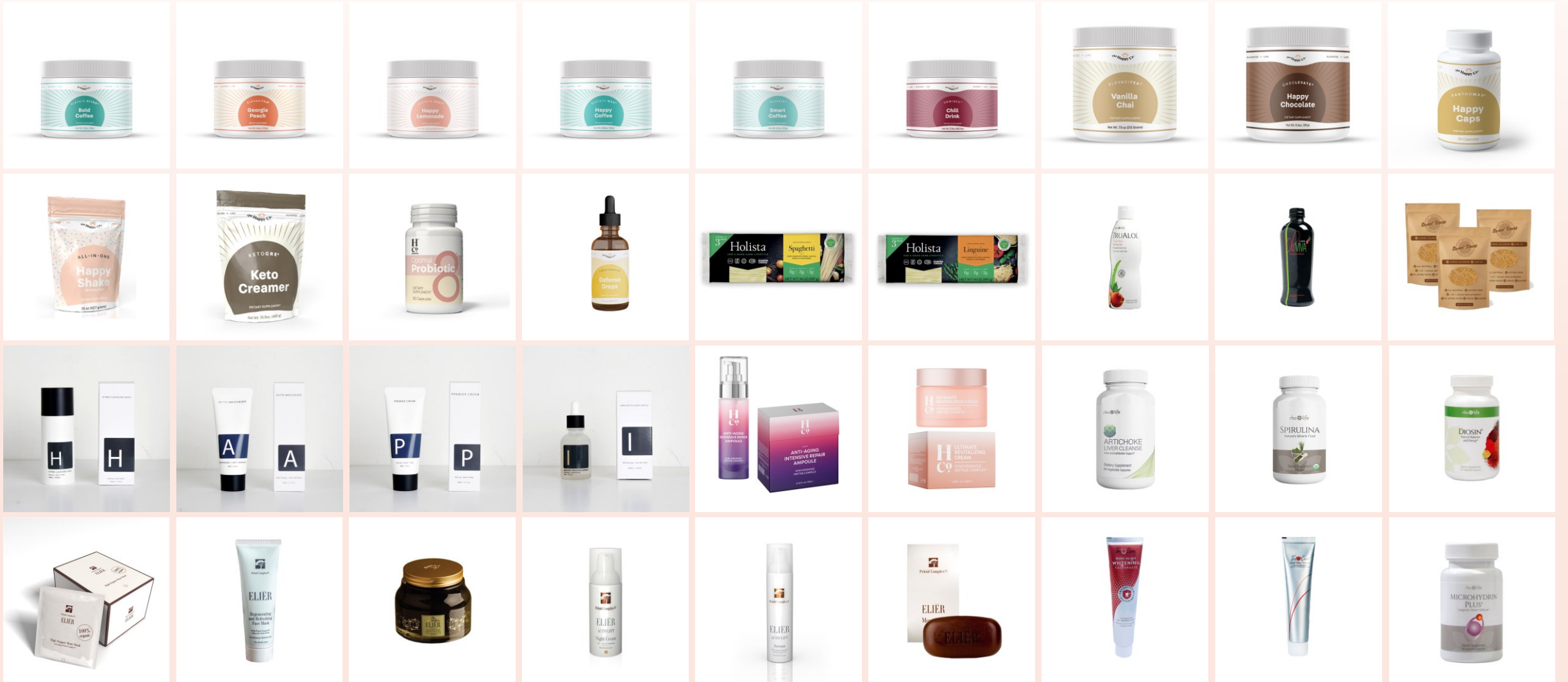
Visit Website:
[RBC Life](#)

Visit Website:
[Hapi Travel](#)

The Happy Co.

HWH
INTERNATIONAL

RBC LIFE
ROYAL BODYCARE



INVESTING IN PRODUCT INNOVATION

We spend millions and years developing and acquiring innovative products **for our members.**



HAPI Functional Drink



HAPI Functional Supplement



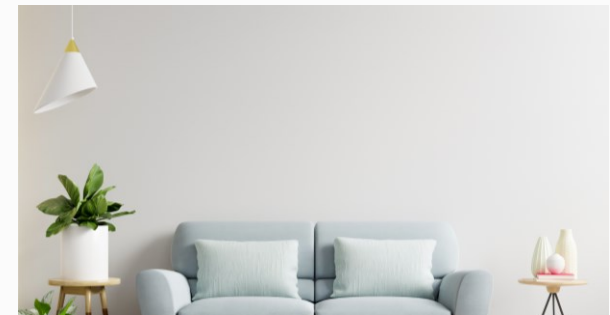
HAPI Functional Food



HAPI Skincare



HAPI Wellness



HAPI Home Improvement



Click on each category to view more details.

HWH Services

REVOLUTIONARY SERVICES

HWH provide our members with exclusive access to services that are **unlike any direct selling company you've ever seen.**



HAPI Finance



HAPI Home



HAPI Wealth Builder



HAPI Meal



HAPI Travel



HAPI Insurance



Click on each category to view more details.

INVESTMENT DIVISION

IMPACT PRODUCT INVESTMENTS



[CLICK BELOW BAR TO RETURN TO DIVISION MENU](#)



AIR PURIFIER

Visit Website:
Puradigm



AROMATHERAPY

Visit Website:
MojiLife



NUTRICEUTICAL NANO-PRODUCTS

Visit Website:
Nano9

SPAC DIVISION

SPECIAL PURPOSE ACQUISITION COMPANY

ALSET
SPAC GROUP

[CLICK BELOW BAR TO RETURN TO DIVISION MENU](#)



ALSET SPAC GROUP is seeking target companies interested to raise capital and listing status on major stock exchanges in the United States



Real Estate Property



Banking & Finance



Network Marketing



Food & Beverage



Hospitality



BioTechnology



Renewable Energy



E-Commerce & Social Media

Visit Website:
Alset SPAC Group

FOOD & BEVERAGE DIVISION

CAFES, COFFEESHOP, CENTRAL KITCHEN



[CLICK BELOW BAR TO RETURN TO DIVISION MENU](#)



4-IN-1 CONCEPT CAFE

4-in-1 Concept

Café with Co-workspace, VR/AR Room & Hapi Travel



SINGAPORE COFFEESHOP

We have a Killiney franchised stall at 9 Penang Road, Singapore. A renowned local brand since 1919.

A HEALTHY MEAL = HEALTHY EXPERIENCE FOR MIND AND BODY



KETO SUBSCRIPTION MEAL

Partnering with Ketomei to serve Keto-diet meal in Hapi Cafe. Members are also able to sign up for Ketomei subscription meal plan



HEALTHY SUBSCRIPTION MEAL

Having healthier meal without much hassle to prepare. Order Fit Fresh subscription meal plan and enjoy freshly made meal.

Visit Website:
Hapi Cafe

Watch Video:
Hapi Café Concept

Visit Website:
Killiney

Visit Website:
KetoMei

Visit Website:
Fit Fresh

FOOD & BEVERAGE

CO-WORKSPACE



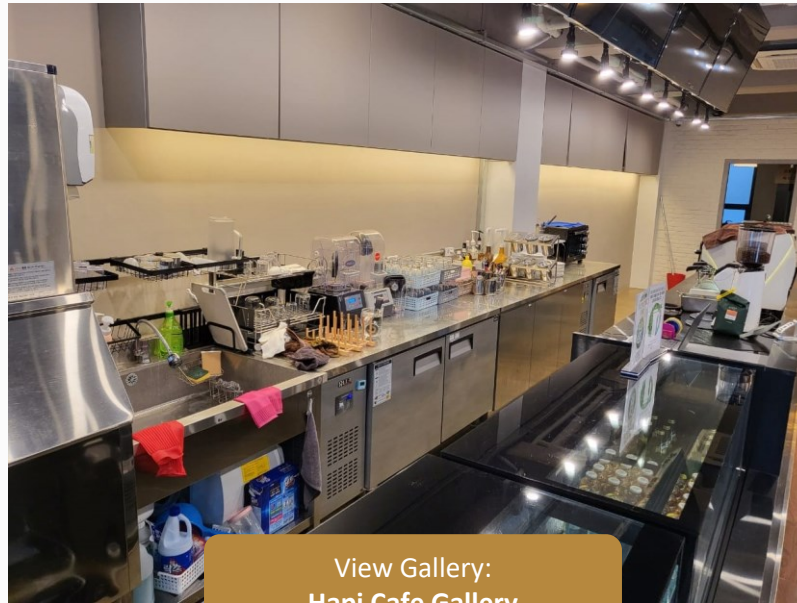
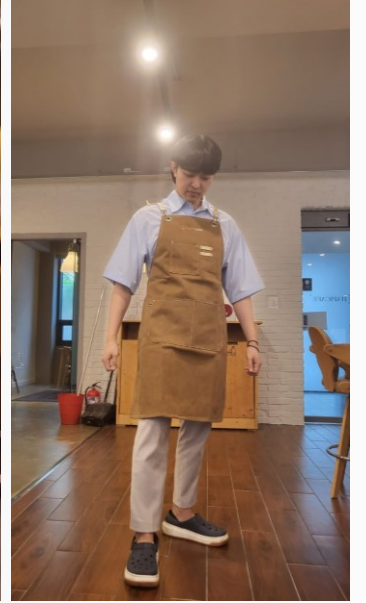
VR/AR ROOM
METAVERSE GAMING / FITNESS

HAPI TRAVEL

Watch Video:
Hapi Café Concept

HAPI CAFE

Gangnam | Seoul | South Korea



[View Gallery:](#)
Hapi Cafe Gallery

4 Level Building in Utah to support the HWH Gig Economy.



Hapi Cafe in Utah, Salt Lake City, United States

Land Size: 2.34 Acres | Location: 644 North 2000 West Lindon, Utah

View Deck:
Utah Building Office

Hapi Café in Utah, Salt Lake City, United States

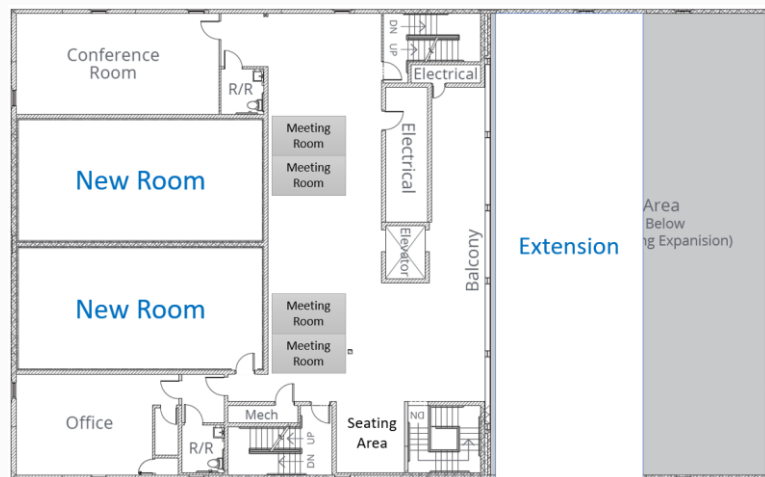
Ground Floor

Ground Floor: Hapi Cafe, VR/AR Room, Trip Flic



1st Floor

Level 1: Co-Workspace: Meeting Rooms | Conference Rooms | Seminar/Training Room | Open Area





At 9 Penang Road, #01-13,
Singapore 238459



Killiney is one of the oldest franchise born out of Singapore. **Founded in late 1919**, in an antiquated yet humble shop, Killiney has now an extensive menu offering a wide variety of local delicacies with 60 over stores globally.

EXPANSION

Leveraging on Alset Group global footprint, Alset is in talks with Killiney to work on a strategic partnership basis to expand Killiney franchise into **Korea, Hong Kong, Macau, US and China.**

Visit Website:
Killiney

KILLINEY
SINCE 1919
@ 9 PENANG ROAD



Killiney Signature

Local Delights

Traditional Toast

All-Time-Favourite

Freshly brewed
Coffee / Tea

Visit Us @ #01-13

OPEN DAILY

Weekdays :8.00am - 5.00pm

Weekends & :8.30am - 5.00pm
Public Holidays

ketomei **FIT FRESH**

CENTRAL KITCHEN | SINGAPORE

239 Pandan Loop, #07-01/04
Food Concept@Pandan Singapore 128425

Visit Website:
KetoMei

Visit Website:
Fit Fresh





Cook



Chill



Pack & Seal



Deliver



Heat

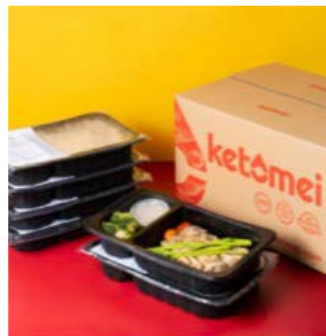


Enjoy



ketomei

Keto Subscription Meal Plan



Extremely Low-Carbs
100% Keto compliant



Central Kitchen for Subscription Meal Plan

FIT FRESH

Nutritious Subscription Meal Plan



BIOMEDICAL DIVISION

BIOMEDICAL TECHNOLOGY



CLICK BELOW BAR TO RETURN TO DIVISION MENU



IMPACT PRODUCTS DEVELOPMENT & RESEARCH

Impact Biomedical drives mission-oriented research and development that advances drug discovery and development for the prevention, inhibition, and treatment of neurological, oncology and immuno-related diseases.



IMPACT BIOMEDICAL, INC.

Visit Website:
[Impact BioMedical Inc.](#)





RESEARCH & DEVELOPMENT

Vivacitas Oncology

A clinical-stage company utilizing next-generation science and technology to enable new options for difficult-to-treat cancers.

Visit Website:
Vivacitas

Summary: Impact Biomedical FDA/MedTech Pipeline U.S.

ASSET	PRECLINICAL	PH I	PH II	PH III	APPROVED	IP	DESCRIPTION
 IMPACT BIOMEDICAL, INC.	LineBacker	→				2029/2036	Small molecule x-bonded polyphenol compounds with potential application in neurological and inflammatory disorders.
	Equivir	→				2036	Combination of generally recognized as safe (GRAS) polyphenols with potential application as antiviral, supplements, or medication.
	Laetose™	→				2029/2036	Sugar and inositol with potential to lower glycemic index, HbA1c, and beta cell protective effect as part of healthy diet.
VIVACITAS ONCOLOGY							
 VIVACITAS	AR-67	→				2035-2040	Next generation Camptothecin compound including proprietary synthesis method with potential in tough to treat cancers. Examples include recurrent glioblastoma (U.S. Orphan Drug Status), colorectal, pancreatic, ovarian, and non-small cell lung cancer.
	Rubitecan	→				TBD	Camptothecin with potential oral application in late-stage pancreatic cancer.

Visit Website:
[Impact BioMedical Pipeline](#)

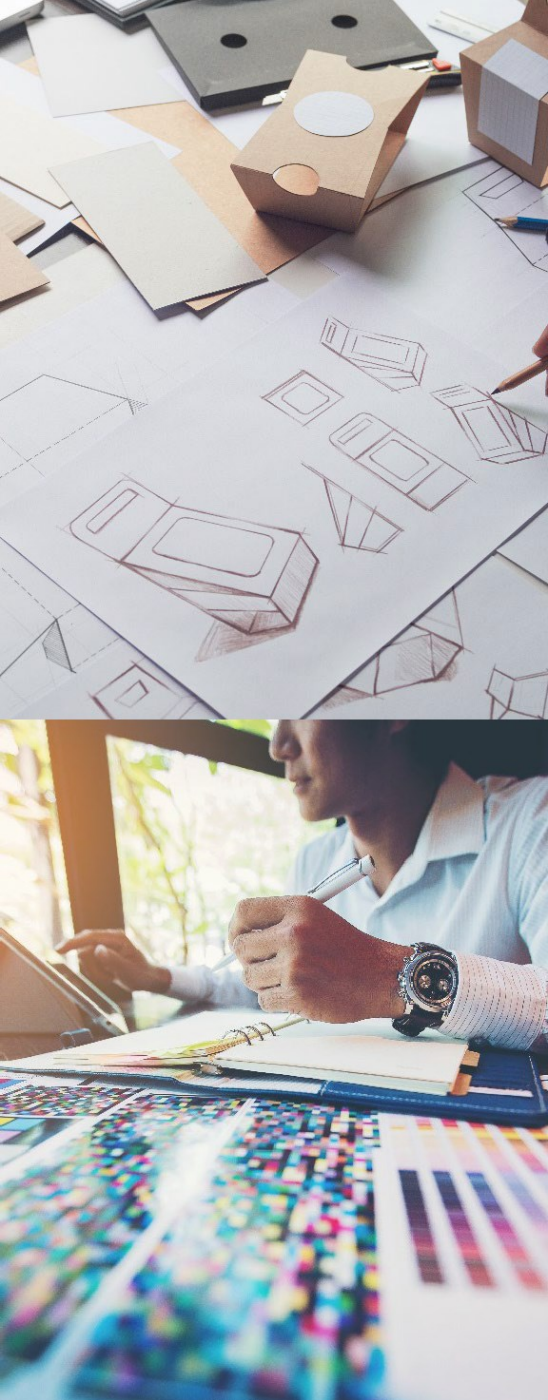
PRINTING AND PACKAGING

DIVISION

PACKAGING PRODUCTION SERVICE



[CLICK BELOW BAR TO RETURN TO DIVISION MENU](#)



- Produces custom paper board packaging
- Serving Clients in the Pharmaceutical, nutraceutical, beverage and specialty foods
- Intelligent packaging and document security printing services
- Printed materials, folding cartons, security paper, vital records, birth certificates, secure coupons, parts tracking forms
- Smart packaging –authentication technologies with integrated augmented reality providing brands with “always on” media channel

Visit Website:
[Premier Packaging Corp.](#)



Premier Packaging's innovative designs deliver functionality, marketability, sustainability, and anti-counterfeiting technology.



DIGITAL

TRANSFORMATION DIVISION

INFORMATION TECHNOLOGY



CLICK BELOW BAR TO RETURN TO DIVISION MENU



Core Elements for Network Marketing Industry



RECRUITMENT

LEARNING



LOYALTY



BUSINESS
MANAGEMENT



eCommerce



BackOffice



Social



Zoom Meeting Integration



Visit Website:
GigWorld Inc.

Watch Video:
GigWorld App



VEI

号通联盟

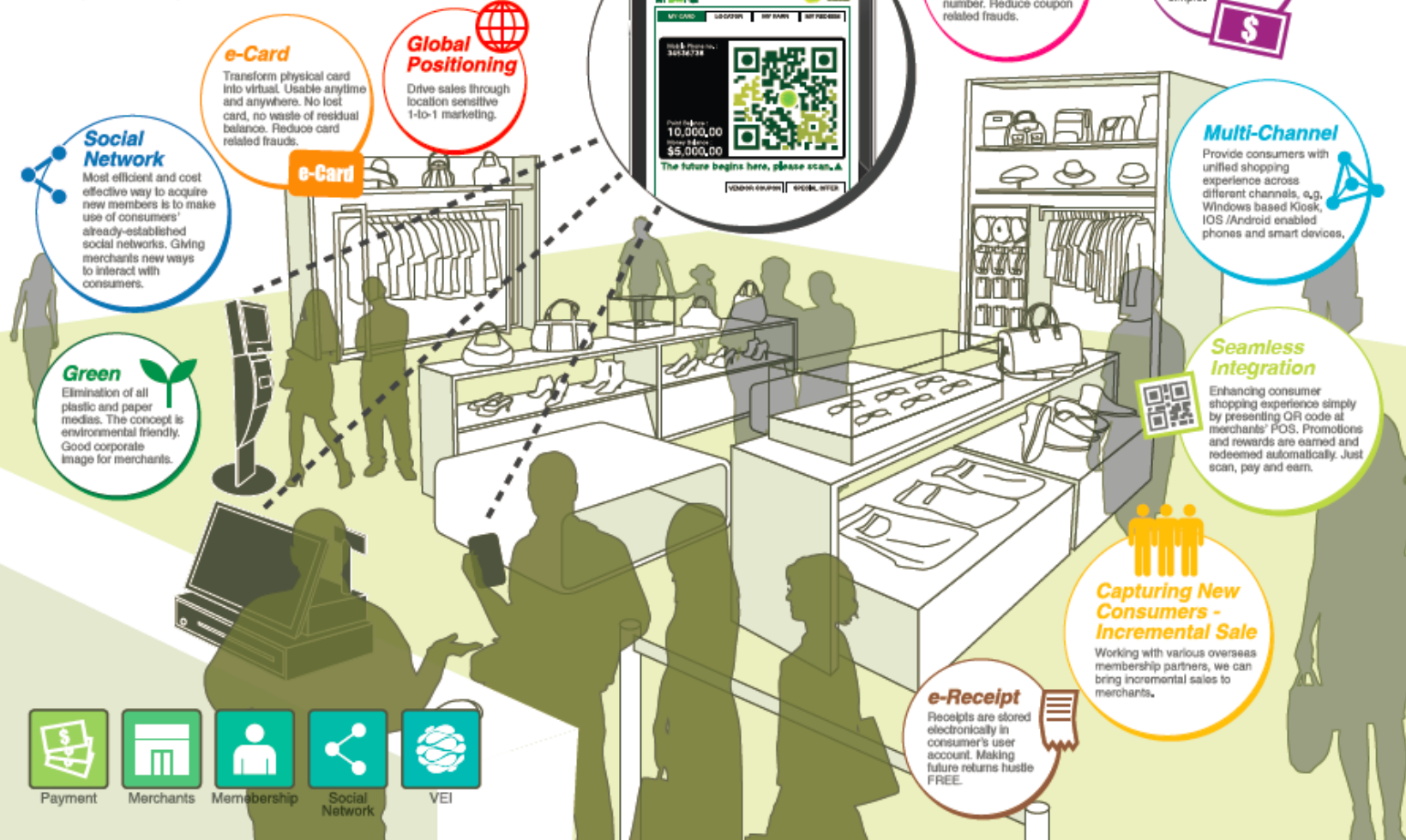
GLOBAL PAYMENT SYSTEM



Mobile Stored Value Card Solution

Scan, Pay and Earn

Mobile Stored Value Card is a technology platform where consumers and merchants meet. It links up merchants' all types of stored value medias such as gift certificate, loyalty card, cash coupon, gift voucher, etc. with a unique but commonly used identifier - phone number.



- Payment
- Merchants
- Membership
- Social Network
- VEI

Visit Website:
Value Exchange International



CORPORATE CLIENTS



香港復康會
The Hong Kong Society
for Rehabilitation



JAPAN AIRLINES



Watson's Wine



奇華餅家
kee wah bakery



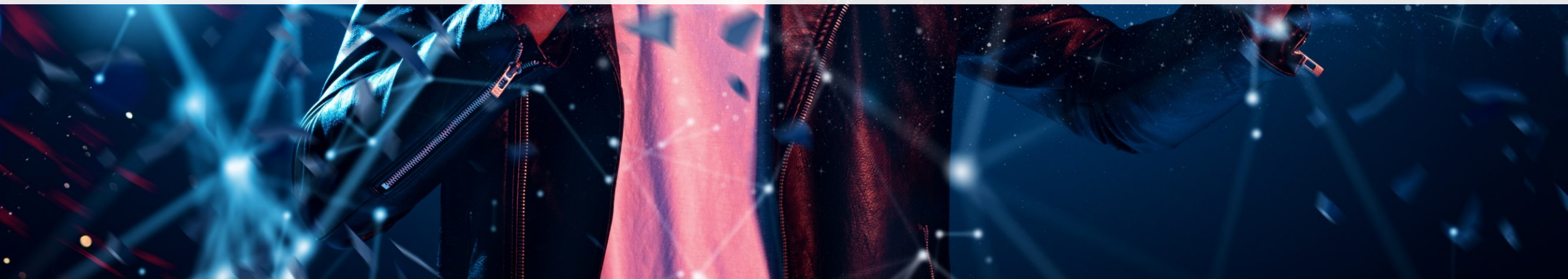
Operate in... GREEN & TECHNICAL BUSINESS MODEL

Since 2011, VEII help different companies developed over 300,000 e-membership in the world.
Saving paper, trees and petroleum.

Visit Website:
Value Exchange International



Incubate and invest in metaverse related projects and work with **Hapi Cafe**, to set aside space for patrons of its cafes to enter existing **Virtual Reality** rooms or games



ALSET CORPORATE VIDEOS

Follow us on YouTube
AEIOFFICIAL



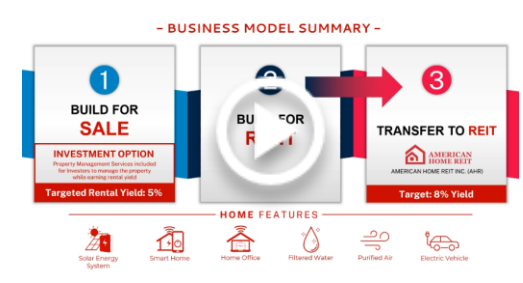
AEI 2022 Corporate Update



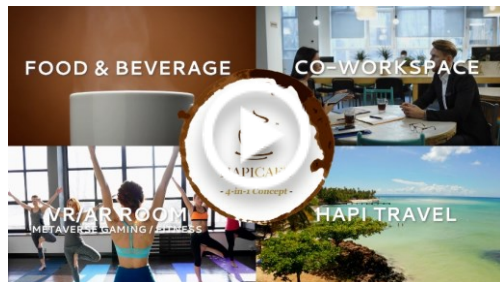
Alset EHome Concept Video



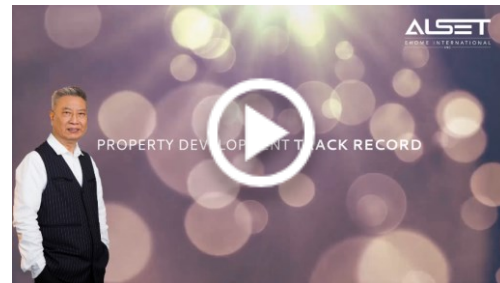
Alset EHome Corporate Video



Alset EHome Business Model



Hapi Cafe Introduction



Mr Chan's Property Track Record



Alset EHome Feature (Overview)



Recap on Recent Ecosystem Development



AEI - American Home REIT



AEI Business Overview



AEI New Feature: Crypto Mining



American Pacific Bancorp Introduction

EXTERNAL RELATED VIDEOS



Elon Musk Officially Revealed The First Tesla Home!



IT HAPPENED! Elon Musk JUST REVEALED Tesla's First Tiny House



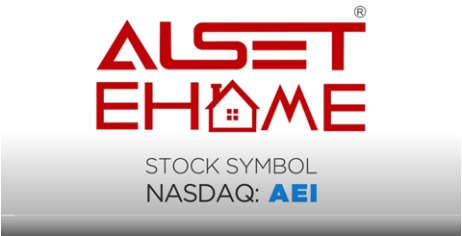
JUST IN! Elon Musk Reveals The First Tesla Home!



JUST IN! Elon Musk Reveals The First Tesla Home!



Tesla JUST OFFICIALLY Revealed Their NEW Homes



Alset EHome International: Diversified Operations Accelerating Sustainable Healthy Living



Alset EHome International: Diversified Operations Accelerating Sustainable Healthy Living



Your future house will come with a FREE Tesla | The Tesla home is coming alive NOW with Alset eHome



Alset Ehome has a lot of new things cooking !



Tesla Short Sellers through the years 😊 Let's have a little fun 😊



Alset Ehome is on cost and ahead of schedule, could do some big moves at the end of year



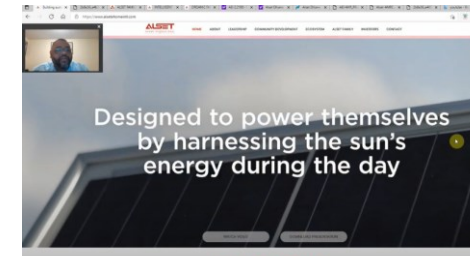
"Health, Wealth & Happiness" Alset Ehome's community



Alset EHome Is Eco Friendly Living on Steroids --- \$AEI



IT HAPPENED! Elon Musk JUST REVEALED The First Sustainable Tesla Home!



AEI Alset EHome, Smart Homes update

CHAIRMAN'S TRACK RECORD

From just **5 out of 35** previously restructured companies:



Fai H Chan
Chairman

Approx. Current **Market Cap Over**

USD 19.9 Bn
AND GROWING

[View Latest
Financial
Update](#)

Bringing in **Profits** of over

USD 1 Bn
PER ANNUM

2020/2021 Financial Update
of 5 companies

USD 18.1 Bn

2020/2021 Revenue
approximately

USD 10.3 Bn

2020/2021 Profits
approximately

USD 1.4 Bn

ZH International Limited

Formerly Known as Heng Fai Enterprises



Hong Kong Stock Exchange Listed
Restructured from the verge of Bankruptcy



www.fai185.com

Global Medical REIT



New York Stock Exchange Listed
Founded and Funded from Ground Zero



www.chanhengfai.com

SingHaiyi Ltd

Formerly Known as SingXpress Land



Singapore Exchange Listed
Restructured from the verge of Bankruptcy



www.fai185.com

China Gas Holdings Ltd

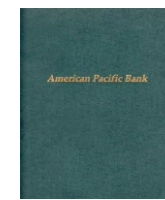


Hong Kong Stock Exchange Listed
Restructured from the verge of Bankruptcy



[Watch Video](#)

American Pacific Bank



NASDAQ Listed
Recapitalized from the verge of Bankruptcy



[观看视频](#)





CHAN HENG FAI
CHAIRMAN



WILLIAM WU
DIRECTOR



WONG TAT KEUNG
DIRECTOR



WONG SHUI YEUNG
DIRECTOR



Moe Chan



Charley Mackenzie



Dr Toh Soon Huat



Frank D Heuszel



Vincent Lum



Antony Chan



Michael Gershon



Ronald Wei



John Thatch



Sharmar O'Bryant



Aileen Ang



Alan Lui



Andrew Stuber



Dave Price



Chris Lee



Jason Grady



Todd D. Macko



Andrew Tan



Alex Liu



Hunter H



BJ Jun



Dave Lee



Nathan Lee



Shirley Lau



Liaw WeiSheng



Adam Tan



Pearlyn Kee



THANK YOU!

Visit Us at:

www.asetehomeintl.com

For enquiries, please contact:

contact@asetehomeintl.com